



The Lighthouse Log

A publication of the
Beavertail Lighthouse Museum Association
Autumn 2002

Beavertail Lighthouse
Museum Association
PO Box 83
Jamestown, RI 02835
E-mail:
info@Beavertaillight.org
Web Address
www.Beaavertailight.org

President

Linda Warner

Vice President

Alan Brunner

Secretary

Linda Jacobson

Treasurer

Richard Sullivan

Board of Directors

Joe Bouchard
Laura Brasil
Alan Brunner
Agnes Filkins
Patricia Lucas
Frank Meyer
Emily Wild



Log Editor
Charlotte Richardson



A message from our president...

Dear Friends:

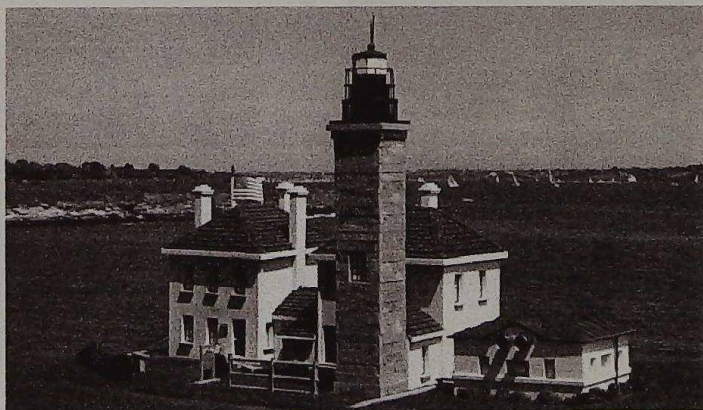
What a great year this has been! Our Museum closed on Columbus Day, after a very busy season. Our docents welcomed over 17,500 visitors this year, about 2000 more than last year

On behalf of our Board of Directors and all of our members, I extend the heartiest of thanks to all of our docents and those who volunteered in many other ways, and would particularly like to thank Jill Meyer for her outstanding work as our Docent Coordinator. She did a tremendous job of keeping the museum staffed at all times. Special thanks are due to Sue Warszawski as well who is retiring as our gift shop coordinator and has done a beautiful job for many years. We welcome Jim Filkins who has agreed to assume the coordinator's duties.

The beautiful scene pictured below, is actually not a scene at all, but rather a model of Beavertail Lighthouse that is built to scale and took two years to complete. It is the Light presented to BLMA at a fundraiser sponsored by the Jamestown Chamber of Commerce. The artisan and donor is Varoujan Karentz, of Jamestown and we are all most appreciative of his wonderful gift. See you next year at the Light.

Linda,

Linda Warner, President



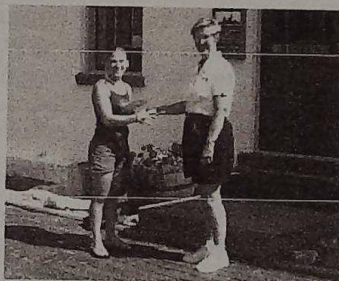
The W. Craig Armington Memorial Scholarship

Beavertail Lighthouse Museum (BLMA) was formed in 1989 for several purposes; to establish a commitment to the preservation and protection of Beavertail Lighthouse and its site, as well as the environment in general; to promote education by providing a resource for the history of a working lighthouse which has played an important part in Rhode Island's history for more than 253 years. To deepen our commitment to education, the Board of Directors voted to establish a scholarship fund for high school seniors who are residents of Jamestown, RI and who intend to seek higher education.

In January 2000, with the death of W. Craig Armington, the community of Jamestown and the Beavertail Lighthouse Museum Association (BLMA) lost an enthusiastic and hardworking member. Craig had served for several years as the treasurer of BLMA and was instrumental in the founding of BLMA Scholarship Fund. The fund was named in his memory as the W. Craig Armington Memorial Scholarship Fund. For the last several years awards have been made to deserving students and we have learned that our funds were well spent as we hear the inspiring stories of former recipients.

Once again, our diligent scholarship committee, Linda Jacobson, Agnes Filkins and Don Barrows, has found just the right two people to receive the BLMA awards. They are Caitlin Brome and Kathleen Almeida, both very deserving students.

*Right: BLMA President,
Linda Warner congratulates
Caitlin Brome, recipient of a
\$1000.00
W. Craig Armington Memorial
Scholarships Award*



*Left: Katherine Almeida is
pictured here receiving a W.
Craig Armington Memorial
Award from BLMA Board
President, Linda Warner
and Board/Scholarship
Committee
Member/Scholarship Agnes
Filkins.*

BOARD NOTES

The Annual Meeting of Beavertail Lighthouse Museum Association was held at the Jamestown Library, with Don Bingham of the American Lighthouse Society, as our featured speaker. He told us about the lighthouses that the Society is working to save and particularly Dutch Island Lighthouse, a neighboring Light off the west shore of Jamestown.

We were pleased to elect three new members to the Board of Directors, Emily Wild, Patricia Lucas and Joe Bouchard and to welcome them to service.

BLMA was the recipient of a very generous donation from the Jamestown Chamber of Commerce. The funds were raised during the popular "Night at the Light" sponsored by the Chamber in August, 2002. Other proceeds raised during the event will underwrite the replacement of the garage doors at the caretaker's quarters.

The Museum hosted a book signing on July 5th. Lenore Skomal, author of "The Keeper of Lime Rock" signed copies of her book about Ida Lewis. The book is available in our gift shop.

In August, the Amateur Radio Lighthouse Society broadcast from the museum as part of "Lighthouses of the Air." This event was arranged by Alan Bestwick, a member of the Society, and is also one of our volunteer docents. The Ham radio operators, using both Morse code and voice transmissions, communicated with operators at other lighthouses in the USA and abroad.

We extend sincere thanks to all of those docents who shared their busy lives with us, keeping the museum open and available to visitors throughout the summer. Their volunteer service is the prime reason why we are able to keep the museum open and operating and they are our valued ambassadors to the thousands of visitors who travel from every corner of the earth, just to visit our island treasure - Beavertail Lighthouse.

They came in groups, couples, families for a recorded total of 17,501 (evidently at least 1 person came alone) and they took a moment to sign our logbook for which we are grateful. 1798 Rhode Islanders; 817 from Massachusetts; 605 from Connecticut topped the list, but there were visitors from all but two of the United States. Thirty-three countries of the world were represented with the highest count from Canada at 180. Germany was next highest with 35. Lighthouses certainly have universal appeal and we were pleased to be on the itinerary of so many visitors. Thank you Laura Brasil for your painstaking work to track who came and from where!

Although our docents are off for the winter, and our cleanup crews have buttoned up the museum 'til spring, the beacon light will continue to flash every 6 seconds; sound its fog whistle when needed, faithful as always to her duty as the guiding light to those who travel the sea.

Don't forget to visit us at the Conanicut Island Art Association's Craft Fair at the Melrose Avenue School. We'll have a good display of our gift shop items there for you Holiday Shopping. - Saturday, December 7, 2002.

And on Sunday, drop by the Museum and take a step back to a time when life was savored at slower pace. We will be decorated in the colonial style of days gone by, and will be serving Hot mulled cider, hot coffee and an assortment of baked goods to tempt you. We will also be holding free drawings of our gift shop items. We'll be there from 1:00 to 3:00 p.m. so take a ride to one of the most beautiful spots on earth and stop in for a visit. We'll be looking for you!!



Jamestown, RI 02835

PO Box 83

BLMA

