



THE LIGHTHOUSE LOG

A publication of the
Beavertail Lighthouse Museum Association

Beavertail Lighthouse
Museum Association
PO Box 83
Jamestown, RI 02835
E-mail:
info@Beavertaillight.org
Web Address
www.Beaavertaillight.org

President
Charles Auld

Vice President
Hugh Bucher

Secretary
Linda Jacobson

Treasurer
Richard Sullivan

Board of Directors

Donald Barrows
Ann Bucher
Brenda Johnston
Frank Meyer
Linda Warner
Susan Warszawski

Editor
Charlotte Richardson



A message from our president...

September, 2001

We are at the end of a great summer at Beavertail Lighthouse Museum! Our docents welcomed increased numbers of visitors, many from foreign countries.

Our year has been a busy one with many revisions and additions to displays; new items in our gift shop; and sprucing up both inside and out. All of this is made possible by the hard work of your officers, directors and volunteers. I want to publicly thank each and ever one for your efforts.

This newsletter also serves as the announcement of our Annual Meeting on September 18th. I encourage all of you to make an effort to attend and meet the people who make the Beavertail Lighthouse Museum a great place to visit.

As some of you already know, my term as president is ending in September and I'm sure with a unanimous vote, Linda Warner will assume the presidency with enthusiasm and plenty of faithful support.

I'm confident that with new faces, will come new ideas, that will make the summer of 2002 even better than the summer just past.

See you at the "Light"!

Charlie Auld

Beavertail Lighthouse Museum Association

Annual Meeting, 2001

**Tuesday, September 18, 2001 at
7:00 p.m.
Jamestown Library**

**The Nominating Committee
(Hugh Bucher, Charles Auld, Brooks Harding)
Propose the following nominees for 3
year terms commencing on Sept. 18, 2001**

**Linda Warner, President
Hugh Bucher, Vice President
Richard Sullivan, Treasurer
Laura Brasil, Director,
Alan Brunner, Director
Agnes Filkins, Director,**

**Guest Speaker
Walter Schroder,
Author and Lecturer
will speak on fortifications in the
Beavertail area,
followed by time for questions/answers.**

**Light refreshments will be served following
the meeting. Please join us, won't you?**

Fantastic!

BLMA members had a great time when the Jamestown Chamber of Commerce joined us on August 22nd to experience together, the unequalled view of the sunset from Beavertail Point! The visit to the museum was a first for some of the chamber members, in spite of the fact that they've lived in Jamestown for quite some time and they were visibly impressed.

A light supper was served and members of BLMA hosted a tour of the area, the lighthouse cottages and the museum.

The weather was most cooperative and the sunset was **spectacular**. We certainly are happy that those who have never visited before have found out what they've been missing and hopefully this will be a let's-do-it-again event.

A Lighthouse Neighbor

Friends of Dutch Island Lighthouse are making progress with their plans to completely restore the long abandoned Dutch Island light, located just off the west shore of Jamestown. The American Lighthouse Foundation was able to secure a lease from the USCG, and the Dutch Island Lighthouse Society was then formed as a chapter. Jim Gomes, a Rhode Island sculptor has donated a 32 inch high model of the light, pictured below. This model was on display at the Beavertail Lighthouse Museum in June. Any information available regarding keepers of the light will be welcomed by the Society.



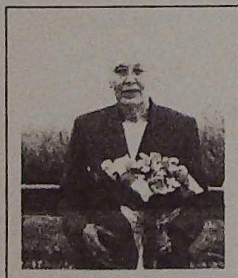
**W. Craig Armington Memorial
Scholarship awarded to two top of the
line Jamestown students!**

The BLMA Scholarship Committee, Linda Jacobson, Linda Warner, and Jack Willis, after several sessions of reviewing applications, arrived at their conclusions in May 2001.

The Scholarship program was established in 1998 and the first awards were made in 1999, in memory of W. Craig Armington. Craig was a long time member and dedicated worker for BLMA, and was also a volunteer in many of Jamestown's organizations. He served several years as Treasurer of BLMA and because of his dedication to our young people, was instrumental in founding the scholarship program.

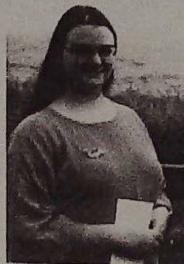
Many thanks are due the Scholarship Committee for their diligence and hard work to bring this program to a successful conclusion.

The scholarship awards were presented on a balmy afternoon, on the grounds of Beavertail Lighthouse. Mrs. W. Craig (Nancy) Armington awarded each of the winners a \$1000.00 check, in memory of her husband and on behalf of BLMA. This is the third annual scholarship presentation.



Nancy Armington accepts a Thank You Bouquet at the BLMA Scholarship awards presentation

And the winners are:



**Maeve Gearing
Daughter of
Mr. & Mrs.
Patrick Gearing
Jamestown, RI**

Maeve is a Jamestown resident and recent graduate of North Kingstown High School, where she achieved the highest grade point average in the class of 2001. She will further her education at Wellesley College in Massachusetts.



**Ethan Murray
Son of
Mr. & Mrs. Linc
Murray
Jamestown, RI**

Ethan, a straight 'A' Portsmouth Abbey student, graduated with high honors. He is already enrolled in a Harvard University program, with initial plans to follow a path in the sciences. His studies will also include music, history and art courses as well.

Congratulations, Maeve and Ethan, on all of your achievements and we wish you the best of everything in all of your endeavors.



The Lighthouse Log
Beavertail Lighthouse Association
Charlotte Richardson, Editor
165 Hamilton Avenue
Jamestown, RI 02835-1280

UNITED STATES POSTAGE
★ ★ ★
161 PB9789334
0120 00.34⁰ SEP 11 01
6738 MAILED FROM ZIP CODE 02835



Linda & George Warner
13 Sady lane
Jamestown, RI 02835



Don't Forget the Annual Meeting
Tuesday – 09/18/2001 - 7:00 p.m
Jamestown Library

Coming Events For BLMA

Season's end activities
Volunteer Recognition Day
Date/Place TBA
Holiday Open House

Look for our Next Issue in November!

Thanks for a great summer!