

Summer 1995



BEAVERTAIL LIGHTHOUSE MUSEUM ASSOCIATION

Summer 1995

BLMA NEWS

FROM THE PRESIDENT

I want to take this opportunity to thank the various Board of Directors members, Executive Committee members, and all the BLMA members for your help over the past two years. Your enthusiastic support has made it possible for BLMA to accomplish the purposes for which it was formed: to operate, maintain, and preserve the Beavertail Lighthouse Museum; to keep the exhibits historically accurate; to recruit and train members and volunteers to staff and maintain the Museum; to collect additional materials and artifacts consistent with the Lighthouse Museum; and to engage in appropriate and relevant fund-raising activities to finance the work of the Association.

I intend to continue to be an active member, and will work to help our Association fulfill its purposes. Towards that end, I wholeheartedly endorse the Nominating Committee's slate of Officers and Directors and urge you to approve it at the BLMA Annual Meeting.

Again, thank you for all of your support, and please continue to be supportive of the new Directors and Officers.

Hugh Bucher

BLMA 1995 ANNUAL MEETING

The BLMA Annual Meeting will be held at the Jamestown Public Library at 7:30 P.M. on Thursday August 31, 1995.

Charlotte Johnson, Executive Director of the Rose Island Lighthouse Foundation will be the guest speaker. She will provide a slide presentation on the history of Rose Island and its Lighthouse. Following her presentation, she will be happy to answer questions about Rose Island.

The agenda for the Annual Meeting is:

- 7:15 P.M. Doors Open
- 7:30 P.M. Call to order/President's remarks
- 7:35 P.M. Guest Speaker's Presentation
- 8:15 P.M. (approx) BLMA Business Meeting
 - President's Report
 - Treasurer's Report
 - Election of Officers/Directors
 - Transfer of Keeper's Hat and BLMA gavel to New President
 - New President's Remarks
 - Adjournment

RED ROOF DEDICATION

The new **Red Roof** was dedicated in memory of Henry Armbrust on Saturday, May 27. A gathering of relatives, friends, and other interested persons was on hand to celebrate the occasion. Refreshments were served following the dedication ceremony. Family members expressed their thanks to the Champlin Foundations and to all those who contributed to the Red Roof Fund for making the project possible.

SLATE OF OFFICERS/DIRECTORS

The Nominating Committee has recommended the following slate of Officers/Directors to be presented to the membership for approval at the BLMA Annual Meeting:

- | | |
|----------------|--------------------|
| President | Anthony J. Faria |
| Vice President | Linda A. Warner |
| Treasurer | W. Craig Armington |
| Secretary | Alden Walls, Jr. |
| Director | Fred C. Clarke |
| Director | Diane Faria |

E A BEAVERTAIL LIGHTHOUSE MUSEUM ASSOCIATION MEMBER!

- NEW
- RENEWAL
- STUDENT - \$5
- INDIVIDUAL - \$10
- FAMILY - \$25
- SPONSOR - \$50
- DONATION - \$

Memberships run July 1 through June 30

want to be an active participant of the Beavertail Lighthouse Museum Association. have indicated my area(s) of interest

- Volunteer Museum Attendant
- BLMA Maintenance Committee
- BLMA Membership Committee
- BLMA Fund Raising Committee
- BLMA Newsletter Committee
- BLMA Archives Committee
- BLMA Sales Committee
- Other

Mail to: Beavertail Lighthouse Museum Association
P.O. Box 83
Jamestown, RI 02835

NAME _____
ADDRESS _____
PHONE _____

Pat Venable for conducting *Tidal Pool Excursions*. They have been very well received and Pat says she enjoys presenting them.

Linda and George Warner for refurbishing the baseboard cover plates. The fresh paint really improved the appearance of the Museum.

Joe Logan for wiring the interactive lighthouse display. Our visitors find it very interesting and informative.

Bob Dennis for providing the base relief map upon which Joe's display has been added.

Nancy Logan for keeping track of all the membership information.

Bill McCraw for conducting the Volunteer Attendant program.

Ann Bucher and Pat Beausoleil for their service on the Board of Directors.

Marion Pierce for her service as Treasurer.

Pede Manchester and Marion Pierce for the installation and upkeep of the new flower bed in front of the Museum.

All those who participated in the pre-season Museum cleanup.

Betty Clem for assembling our scrapbooks.

Elaine Hunt for photographing the Red Roof's progress and the dedication ceremony.

All the Volunteer Attendants. Without you, the Museum doors would be closed.

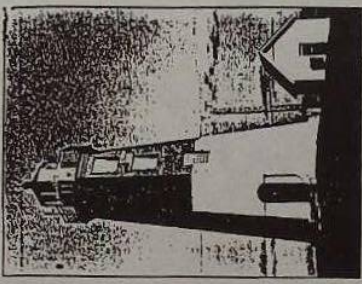
MEMBERSHIP RENEWAL REMINDER

BLMA memberships are for the period July 1 through June 30. If you have already renewed for 1995-1996, thank you. If you haven't, please do so as soon as possible. We appreciate and need your continued support.

POINT JUDITH LIGHTHOUSE

Though a lighthouse was not built until 1810, a beacon was maintained from Revolutionary days at the West entrance to Narragansett Bay to warn mariners of the shoals which are particularly dangerous during storms.

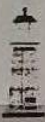
The present octagonal tower, built in 1857 of dressed stone, has an automated white light flashing through a 4th order Fresnel lens 65 feet above the water.



PENDING PROJECTS

Now that the Red Roof Project has been completed, several new projects are being planned:

- A. Renovating the back room so it can be use as a sales area.
- B. Replacing or repairing windows to improve their appearance and the interior environment to help preserve the Museum displays.
- C. Replacing the Lighthouse models display cases with ones that are of a better quality and appearance.
- D. Purchasing insulated window inserts to help reduce heating costs.



BLMA
P O Box 83
Jamestown, RI 02835

HAVE YOU RENEWED YOUR BLMA MEMBERSHIP? IF SO, THANK YOU FOR YOUR CONTINUED SUPPORT; IF NOT, PLEASE DO SO AS SOON AS POSSIBLE - WE NEED YOUR HELP TO KEEP THE LIGHT SHINING.